

RX-8 SPECIFICATIONS & CAPACITIES

Specifications	6-speed manual	6-speed Sport AT
Engine size and type	1.3-liter RENESIS 2-rotor rotary	1.3-liter RENESIS 2-rotor rotary
Compression ratio	10.0:1	10.0:1
Engine Intake configuration	6-port	6-port
Horsepower, SAE net	232 @ 8500 rpm	212 @ 7500 rpm
Torque, SAE net (lb-ft)	159 @ 5500 rpm	159 @ 5500 rpm
Transmission	6-speed manual	6-speed Sport AT automatic
Layout/drivetrain	Front mid-engine/rear-wheel drive with Power Plant Frame	Front mid-engine/rear-wheel drive with Power Plant Frame
Steering ratio	16.4:1 (3.0 turns, lock-to-lock)	16.4:1 (3.0 turns, lock-to-lock)
Turning circle, curb-to-curb (ft)	34.8	34.8
Front brakes	12.7-inch ventilated discs	12.7-inch ventilated discs
Rear brakes	11.9-inch ventilated discs	11.9-inch ventilated discs
Required fuel	Premium unleaded gasoline	Premium unleaded gasoline
EPA estimated fuel economy, mpg	16 city/22 highway	16 city/23 highway
Curb weight with popular options (lb)	3064	3111
Exterior Dimensions		
Wheelbase/overall length (in)	106.4/175.6	106.4/175.6
Overall width/height (in)	69.7/52.8	69.7/52.8
Track, front/rear (in)	59.1/59.3, 59.3/59.4 (R3)	59.1/59.3
Interior Dimensions		
Front headroom/legroom/shoulder room (in)	38.2/42.7/54.8	38.2/42.7/54.8
Front headroom with moonroof (in)	36.7	36.7
Rear headroom/legroom/shoulder room (in)	36.8/32.2/54.9	36.8/32.2/54.9
Rear headroom with moonroof (in)	36.5	36.5
Capacities		
Trunk volume (cu ft)	7.6	7.6
Fuel capacity (U.S. gallons)	16.9	16.9

RX-8 ENGINE & MECHANICAL

Engine & Transmission	6-speed manual	6-speed Sport AT
1.3-liter RENESIS 2-rotor rotary	S	S
Dual engine-oil coolers	S	S
Lightweight carbon-fiber driveshaft	S	-
Torque-sensing conical limited-slip differential	S	T>
Rack-and-pinion steering with electric variable assist	S	S
Suspension & Brakes		
Power-assisted 4-wheel disc brakes	S	S
Anti-lock Brake System (ABS) with Electronic Brakeforce Distribution (EBD)	S	S
Double-wishbone front suspension with light-alloy upper and lower arms, shock-tower brace, coil springs and stabilizer bar	S	S
Multi-link rear suspension with low-mounted coil springs and stabilizer bar	S	S

S: Standard O: Optional T: Touring GT: Grand Touring A: Dealer-available accessory - : Not available

* Always wear your seat belt and secure children in the rear seat belts. † SIRIUS Satellite Radio reception requires a subscription and Mazda satellite radio receiver accessory kit. Available only in the U.S., except Alaska and Hawaii.

RX-8 OPTIONS & OPTION PACKAGES

Options/Option Packages	RX-8
Premium Package 1: 300-watt Bose® 9-speaker audio system with Centerpoint® Surround Sound and AudioPilot® automatic noise compensation technology; power sliding-glass moonroof; SIRIUS Satellite Radio® and 6-month subscription	O (RX-8 Touring)
Premium Package 2: Power sliding-glass moonroof; SIRIUS Satellite Radio® and 6-month subscription	O (RX-8 Grand Touring)
Navigation System: DVD-based with 7-inch LCD touch screen	O (RX-8 Grand Touring)
SIRIUS Satellite Radio® receiver kit	O/A
Rear wing spoiler (Automatic transmission only)	O/A
Front and rear splash guards (N/A on R3)	O/A
In-dash 6-disc CD changer (Sport only, standard on Touring and Grand Touring)	O/A
Spare-tire kit (trunk-mounted; includes wheel, tire and mounting hardware)	O/A
All-weather floor mats	O/A
Cargo tray	O/A
Cargo organizer	O/A
Collapsible cargo carrier	O/A
Cargo net	O/A
Door-edge guards	O/A
Moonroof wind deflector (requires Premium Package)	O/A

MazdaUSA.com
Wherever you see this symbol, you can get the whole story on our interactive Web site.

RX-8 EXTERIOR

Body	6-speed manual	6-speed Sport AT
Dual bright-tipped exhaust outlets	S	S
Freestyle door system	S	S
Aluminum hood and rear doors	S	S
Rear lip spoiler	S	-
Flip-open rear quarter windows	S	S
In-glass radio antenna; rear window defogger	S	S
Dual body-color power remote outside mirrors	S	S
2-speed variable-intermittent windshield wipers	S	S
Clear-lens halogen headlights with projector-type low beams	S	S
LED taillights	S	S
Tires & Wheels		
18-inch alloy wheels with 225/45R18 high-performance tires	S	S

RX-8 INTERIOR

Comfort & Convenience	6-speed manual	6-speed Sport AT
Center console with covered storage, dual cup holders and 12-volt power point	S	S
Rear console with covered storage and dual cup holders	S	S
Overhead console with sunglasses holder and front map lights	S	S
Power front windows with 1-touch up/down and remote down feature	S	S
Power door locks with 2-stage unlocking (driver's door, all doors)	S	S
Remote keyless entry system with two transmitters	S	S
Cruise control	S	S
Tri-mode gauge lighting: blue (entry); white-on-black (daytime); red-on-black (nighttime)	S	S
Digital speedometer with dual trip odometers	S	S
Center instrument display panel with clock, audio system, climate control and outside ambient temperature	S	S
Leather-wrapped 3-spoke tilt steering wheel with audio and cruise-control switches	S	S
Steering-wheel-mounted paddle shifters for Sport AT automatic transmission	-	S
Leather-wrapped gearshift knob	S	S
Heater/defroster with CFC-free air conditioning with dust/pollen filter	S	S
Seating & Trim		
Reclining front bucket seats with passenger seat 1-touch walk-in feature	S	S
4-passenger seating with rear bucket seats and trunk pass-through	S	S
Cloth-trimmed upholstery; carpet floor mats	S	S
Audio		
100-watt AM/FM/CD stereo with 6 speakers, including 2 tweeters	S	S
Auxiliary-audio input jack	S	S

RX-8 SAFETY & SECURITY

Safety & Security	6-speed manual	6-speed Sport AT
Dual front air bags*	S	S
Front seat-mounted side-impact air bags*	S	S
Side-impact air curtains* with coverage for front and rear seats	S	S
3-point seat belts for all seating positions	S	S
Rear-seat LATCH child-safety-seat anchors	S	S
Anti-theft alarm system with engine immobilizer	S	S
Tire-Pressure Monitoring System (TPMS)	S	S

Color Combinations



Sunlight Silver Metallic

TRIM LEVEL	INTERIOR FABRICS
RX-8 Sport, Touring	Black Cloth
RX-8 Grand Touring	Black Leather



Diamond Gray Metallic

TRIM LEVEL	INTERIOR FABRICS
RX-8 Sport, Touring	Black Cloth
RX-8 Grand Touring	Black or Dune Beige Leather



Crystal White Pearl

TRIM LEVEL	INTERIOR FABRICS
RX-8 Sport, Touring	Black Cloth
RX-8 Grand Touring	Black Leather



Sparkling Black Mica

TRIM LEVEL	INTERIOR FABRICS
RX-8 Sport, Touring	Black Cloth
RX-8 Grand Touring	Black Leather
RX-8 R3	Red Leather



Velocity Red Mica

TRIM LEVEL	INTERIOR FABRICS
RX-8 Sport, Touring	Black Cloth
RX-8 Grand Touring	Black Leather
RX-8 R3	Gray/Black Leather



Brilliant Black Clearcoat

TRIM LEVEL	INTERIOR FABRICS
RX-8 R3	Gray/Black Leather



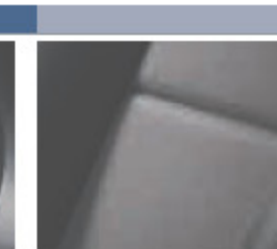
Aurora Blue Mica

TRIM LEVEL	INTERIOR FABRICS
RX-8 R3	Gray/Black Leather

RX-8 R3



19-inch Alloy



Gray/Black Cloth/Leather

RX-8



18-inch Alloy

RX-8 MODELS

Models

RX-8 TOURING Includes the following features in addition to or in place of RX-8 Sport:

- In-dash 6-disc CD changer
- Torque-sensing conical limited-slip differential (Sport AT)
- Auto-dimming rearview mirror with HomeLink®
- Self-leveling Xenon low-beam headlights
- Fog lights
- Dynamic Stability Control (DSC) with Traction Control System

RX-8 GRAND TOURING Includes the following features in addition to or in place of RX-8 Touring:

- 300-watt Bose® 9-speaker audio system with Centerpoint® Surround Sound and AudioPilot® automatic noise compensation technology
- Bluetooth® hands-free phone capability
- Automatic climate control
- Leather-trimmed seats; leather-wrapped parking-brake handle
- 8-way power driver's seat with power lumbar support and 3-position seat memory
- Heated front seats
- Power driver's seat 1-touch walk-in feature
- Mazda Advanced Keyless Entry & Start System
- Rain-sensing variable-intermittent front windshield wipers
- Dual body-color heated power remote outside mirrors
- Auto on/off headlights

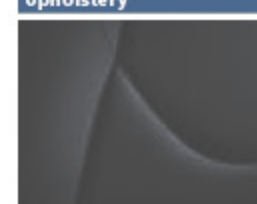
RX-8 R3 Includes the following features in addition to or in place of RX-8 Touring:

- 300-watt Bose® 9-speaker audio system with Centerpoint® Surround Sound and AudioPilot® automatic noise compensation technology
- Recaro® front sport seats with leather side bolsters
- Sport-tuned suspension with Bilstein® shock absorbers
- Bluetooth® hands-free phone capability
- Leather-wrapped parking-brake handle
- 19-inch forged aluminum alloy wheels with P225/40R19 high-performance tires
- Rear wing spoiler; side sill extensions
- Unique sport front bumper
- Urethane foam-injected front-suspension cross member
- Mazda Advanced Keyless Entry & Start System

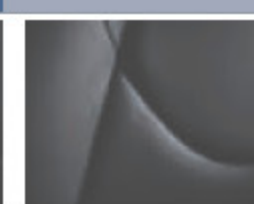
Dynamic Stability Control (DSC) is an electronic system designed to help the driver maintain control under adverse conditions. It is not a substitute for safe driving practices. Factors including speed, road conditions and driver steering input can all affect whether DSC will be effective in preventing loss of control. Please see your Owner's Manual for further details.

Product Changes and Options Availability: Following publication of this brochure, certain changes in standard equipment, options, prices and the like, or product delays may have occurred which would not be included in these pages. Your Mazda dealer is your best source for up-to-date information. Mazda reserves the right to change product specifications at any time without incurring obligations. Options shown or described in this brochure are available at extra cost and may be offered only in combination with other options or subject to additional ordering requirements or limitations.

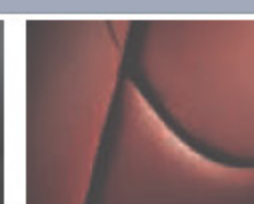
Upholstery



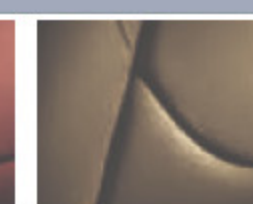
Black Cloth



Black Leather



Red Leather



Dune Beige Leather